

Friends of Selsdon Wood



Working to improve our wood

Phone: 020-8657 0423

e-mail: selsdonwood@gmail.com

website: <http://www.friendsofselsdonwood.co.uk>

September/ October Newsletter

Selsdon Wood Open Day



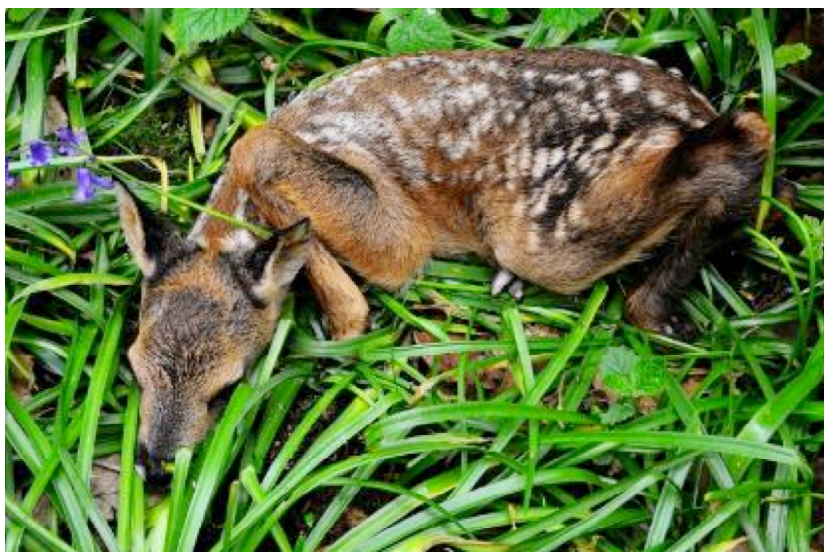
The FSW Open Day, held on Sunday 2nd September was a great success - increasing public awareness of the wood, recruiting new members and raising funds (over £220) for FSW.

Stands included displays from Croydon Bee Keepers, The Old Surrey Downs Project, East Surrey Badger Protection

Society, RSPB and East Surrey Wood Turners, and there were locally made crafts for sale. Refreshments were provided by local Scouts. There was also a FSW White Elephant Stall with books, a tombola with many prizes and our regular Photographic Competition.

This year there were 19 entrants who submitted over 70 photographs. From these, a shortlist of 50 were selected and printed for display so the winners could be chosen by those visiting the FSW Open Day. Over 100 visitors actually voted for their favourite photographs in each category. Snappy Snaps of Croydon kindly donated two £25 vouchers as prizes for the Junior and Senior competitions. To see the winning and short listed photographs from this and previous years, log onto www.friendsofselsdonwood.co.uk click Photo Competition, scroll down to galleries.

Senior Winner 2012 - Fawn in Court Wood by Dave Evans.





Finlay visited the woods on the occasion of the FSW Minibeast Hunt and walked round with his grandfather's camera taking some amazingly detailed photographs.

The Friends would like to thank everyone who contributed and to remind all you photographers that the 2013 competition starts now. In the past there has been a shortage of photographs from autumn and winter so please do take your cameras with you when you visit the woods over the next few months to redress that imbalance in the 2013 competition. You can send your entries to FSW at any time and we will be happy to hold on to them ready for printing and judging at the Open Day next year.

Open Day also included a Children's Tent with a special competition and other items of interest and a story time session for the youngest. There were two guided walks for adults and children (see the Walks page of the website for details) led by Ted Forsyth. Both walks went very well with about eight participants on each. In the first walk there was a family with a small boy who, every time Ted showed a berry, would ask, "Is it edible?" It became a standing joke which all anticipated when the next fruit, berry or nut appeared.

The route was Greenhill Way, Pool Grove, Middle Gorse, The Wend, and the Centenary and Jubilee Plantations. Items of interest were pointed out along the way, including the difference between Common Hawthorn and Midland Thorn in leaves and in berries, our single specimen of a Broad Leaved Helleborine and Raspberry canes in Middle Gorse. On the second walk a gent asked about the Oak trees near the Centenary Plantation and the strange acorns. Ted explained that these were galls and discussed the differences between Pedunculate, Sessile and Turkey Oak and was able to show them the Turkey Oak in the gap to the next field.

The Friends would like to thank Linda Morris for organising the event and all committee members and other Friends who helped erect the tents and man the stalls. A big thankyou too to everyone who came along to spend their money and thus help fund the work of the Friends and our supporting organisations.

We hope you will all come again to the 2013 Open Day next September 1st!

FSW 2013 Calendar

This year we produced a FSW 2013 Calendar using photographs from previous years' competitions. It proved very popular and we sold out on Open Day but we have received a number of additional requests and will be reordering - so if you would like any calendars please let us know asap by e-mail or phone 020-8657 0423. Priced £5 - plus p&p if this is necessary.



FSW Logs for Sale

To make use of the timber felled in coppicing and by contractors felling unsafe trees, we can offer bags of logs for a donation of £4 each. If you, or anyone you know, would like to obtain logs from us please contact Neale Fox (e-mail karen.e.fox@btinternet.com or phone 020-8657 0384) to arrange collection.

Don't forget to use a fireguard when burning logs as they can spark.

Nature Notes

During autumn, many small birds join together in mixed flocks and wander around the woodland as a group. Apart from various species of tit, you also find an occasional Goldcrest. Among those visitors are Siskins and Redpolls which occasionally appear in the wood in large numbers in winter. Like these two species, Goldfinches and Greenfinches form winter flocks, and all four might be found feeding on birch trees.

We have previously mentioned Great Tits visiting bird feeders and showing tumours, usually on the face. Some have been seen recently and we would like to ask anyone seeing examples to report them to us with details of when and where they were seen.

Fungi need moisture but the last few months have been rather dry. Autumn is usually a good time for fungi so if we get some wet weather see what you can find. Fungi act to rot down organic material so they can be found on trees, fallen logs, twigs and buried material. A group of organisms that were once thought to be primitive forms of fungi, but are now classed as protozoa, are the slime moulds. They are single-celled mobile organisms that join together under the right conditions to form colourful masses that move very slowly. One species seen recently in Selsdon Wood on birch logs by Addington Border is the bright yellow *Fuligo septica*, which, because of its appearance and size, rejoices in the common name of Dog Vomit slime mould.



Dates for your diary – see website for full programme.

We have already drafted a full programme of walks and events for 2013.

Work days – Sundays: Sept 30th, Oct 7th & 28th, Nov 4th & 25th, Dec 2nd & 30th.

Meet at 10am in Selsdon Wood car park off Old Farleigh Road.

You choose jobs to suit your strength. Tools are provided but please bring a drink and food if you feel you need them. You work for as long as suits you - some of us work until about 2.30pm, others leave earlier. If you need more information please contact Ted closer to the time on 020-8651 0558 or e-mail: forsythted@aol.com

Members meetings – Mondays: Sept 24th, Oct 29th, Nov 26th, no December meeting.

All meetings from 8 to 10pm in The Forum, Forestdale.

Guided Walks of Discovery – Meet at Old Farleigh Road car park.

Our Walks are slow and easy - lasting about 2 hours, looking at all flora & fauna.

October Sun 14th 10am – Autumn Fungi & Fruit with Jane McLaughlin.

Final Thoughts

Although our photographic competition is over for this year, we are entering one of the most photogenic seasons of the year, so don't forget to take your camera with you when you visit Selsdon Wood. Our Competition terms and entry form will appear in future editions of this newsletter or go to our website.