



New Benches - Last month we reported on the refurbishment of all the notice boards at the entrances to Selsdon Wood. A further project this spring has been the installation of 5 new benches on April 1st 2015. They comprise replacements for 3 benches that had rotted and dedicated benches to Rob Sowter and G G Lewis. Rob Sowter was a familiar sight to many users of Selsdon Wood as he worked on his coppice rotation along the Wend. He also taught FSW members about his craft and led our Charcoal Burning events. Sadly he died in 2014 and as a tribute the FSW contributed a dedicated bench that is situated beside the coppice strip at the junction of The Wend and Noakes Way. The bench dedicated to G G Lewis was funded by friends and family and is situated at the southern end of the Great Field.

Many thanks to David Malins who organised the project and to Alan Bushnell & his son John, Ashley Green (Leader of 17th Purley Scouts), his son Nathan and friend Ken Jackson (Leader of 1st Selsdon & Addington Scouts) who provided the muscle for the work of installation and the vehicle for transport of the benches to their allocated sites. We hope you enjoy sitting on all of these benches to enjoy the tranquillity of our lovely woods.

Full reports of both projects with photographs are available on the **Projects page of the FSW website**. The **Benches page of the website** also has more information about Rob Sowter and Mr G G Lewis.

Last Month's Spring Walk with the FSW on 12th April - On this lovely spring day about 35 people joined us on our walk to spot the signs of spring. Heather led the walk supported by Ted, Linda, Sandra and Karen (and, as always, Bella). We enjoyed the glorious and fragrant carpets of anemones in the northern part of the wood and identified over 25 species of spring flowers, heard 11 different birds (some of which we managed to catch sight of) and spotted a Roe Deer and several Brimstone and Peacock butterflies. It was too early for the bluebells although the sharp eyed amongst us managed to spot some and the Blackthorn bushes were just starting to bloom. **See the spotters guide overleaf for some of what we saw**. A full report of the walk is on the Walks page of the website.



This Month's Walk - Bluebells & Birds with the Friends on Saturday 2nd May @ 2pm - The many sunny days between the April walk and this one have brought all the blossom out on the Blackthorn and the Bluebells are now at their peak. Join us to enjoy the sights and smells of the bluebells, to look for other spring flowers and to listen to the birds. Meet in the car park on Old Farleigh Road for a gentle stroll for about 2 hours.

FSW Annual Photographic Competition When the bluebells are out many of us are inspired to get snapping with our cameras and we would love to have your photos as entries for our annual competition. However, we like to include photographs from all seasons so please look back over any you may have taken over the autumn and winter months. Entries for our 2015 competition must have been taken in Selsdon Woods between 1st September 2014 and 20th August 2015. Details of how to submit your photographs can be found on the website.

FSW Logs and Charcoal - We still have available some of the charcoal we made back in May 2014 and we will be delighted to let you have 3 kilo bags for a donation of £5 each. Please contact Neale Fox for information or to arrange collection – phone 020-8657 0384 or e-mail logs.selsdonwood@btinternet.com.

Our spotters' guide this month shows some of the signs of spring seen on our April walk.

Keep an eye on the FSW website (Flora and Fauna pages) for all the latest sightings of plants and animals and while you are on line take a look at this great blog about the Selsdon Wood white squirrel written by regular contributor and last year's photo competition winner Mark Shoemith.

<http://www.shoeyphoto.com/blog/2015/3/22/albino-squirrels-in-selsdon-wood>.

Spring Walk 2015

These are some of the sights and signs of spring that we enjoyed on our April walk.

Do join us on May 2nd for all this and more.



Carpets of anemones clothing the northern woods (eg Addington Border) and perfuming the air with their delicate scent.

Dog Violets



Widely dispersed along path edges. Many at the top of F2 near Heather Creamer's bench.

Cowslips



A large clump behind the toilet block and many others in the Great Field southern end.

Periwinkles



In Linden Glade and in Avis Grove close to the Norwegian Spruce trees at the field end.

Celandine



In many woodland path edges especially in the southern part of the wood eg Farleigh Border.

Ground Ivy



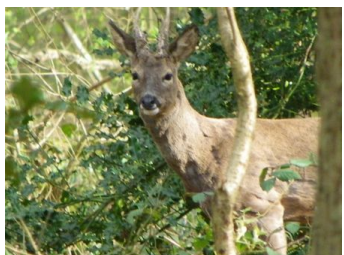
In many field borders. A large clump can be found beside the benches backing the Centenary.

Toothwort



A very curious parasitic plant found in only one location in Selsdon Wood. Join us to see it in May.

Roe Deer



We spotted one on our April walk and we may be lucky enough to see another in May.

Peacock Butterfly



Lots around at present. We saw some on the April walk and are very likely to spot more in May.

Nuthatch



We saw one in April and heard it making it's "weeeep, weeeep" call. Listen to the call on the RSPB website www.rspb.org.uk.

Homo Sapiens



Around 35 of us looking at the Ground Ivy by the Centenary. **Join us on May 2nd to see if it is still there.**