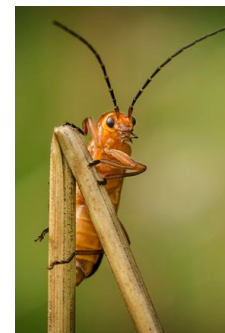




**Last Month's Walk - Discover Butterflies - with Malcolm Bridge (report from Ted Forsyth)** - After overnight thunderstorms nine of us gathered in the car park hoping the rain would hold off. As we waited for possible latecomers Malcolm told us about Butterfly Conservation's request for sightings of nineteen species of butterfly and exhorted us to send in our results. He also handed out copies of their leaflet on Gardening for Butterflies, which included pictures of a dozen or so common butterflies. Eleven butterflies and two moths were identified on our walk, plus a Ladybird and a Crab Spider. There was not even a spot of rain on a day when we thought we would be swamped, and we even had multiple good views of the gorgeous Silver-washed Fritillaries! On page 2 of this newsletter we have a guide to 14 of the butterflies to be found in our wood. We hope it will be useful as a guide on your walks. Key areas to visit are The Wend where there is a Buddleia and the eastern edge of Vale Meadow or northern edge of David's Crook where there is Marjoram. Both of these plants are very attractive to butterflies.



On the Home page of our website we have a link to a superb blog by Mark Shoesmith all about shooting wildlife photography in Selsdon Wood. In particular take a look at his scary caterpillar video! <http://www.shoeyphoto.com/blog/2014/7/3/wildlife-photography-in-selsdon-woods> Mark's photo (see right) was the runner up in the 2013 photo competition and is also the cover photo for our 2015 calendar, which will be on sale at Open Day in September.

## **This Month's Events - Thursday 14<sup>th</sup> August 8.30pm - Bats & Moths - with Malcolm Bridge & Ted Forsyth -**

This evening walk is always popular and we yet again have the expertise of Malcolm & Ted to lead us. We amble round at twilight with bat detectors and in past years have always been able to spot some batty action. At the end of the walk we shall visit a moth trap and listen to Malcolm's informative talk about the natural history of moths.

**Wednesday 20<sup>th</sup> August 2pm - Mini-Beast Hunt - with Roger Hawkins** - This is a fun event of interest to young children and their parents. After an introduction from Roger, the children will be equipped with nets and collecting tubes and sent off to hunt around the car park field to see what they can find. There will be several of us back at base to help identify all findings - last year over 16 different species were found.

**Annual Photographic Competition** - There are just a couple of weeks left to enter our 2014 Photo Competition! Please send in up to 6 of your favourite photographs taken in Selsdon Woods between 1<sup>st</sup> September 2013 and 20<sup>th</sup> August 2014. A shortlist of the 50 best entries will be selected and printed for display at the FSW Open Day on Sunday 7<sup>th</sup> September when the public will be invited to participate in a secret ballot to select the winners. The photograph with the most votes will win a cash prize of £50, donated by a generous sponsor, and two runner-ups will win £40 vouchers donated by Snappy-Snaps. Details of how to submit your photos are on the website.

**FSW Logs and Charcoal** - We still have available some of the charcoal we made back in May and logs from the timber felled in coppicing. We will be delighted to let you have bags of charcoal (3 kilos) now for a discounted donation of £5 each, large bags of charcoal finings (a garden fertiliser) for £5 each and sacks of logs for £4 each. Please contact Neale Fox for information or to arrange collection - phone 020-8657 0384 or e-mail [logs.selsdonwood@btinternet.com](mailto:logs.selsdonwood@btinternet.com).

**Lost Property Box comes up Trumps again** - Many thanks to the person who found an expensive extending lead, lost by my friend on a recent walk, and popped it in our Lost Property box behind the notice board in the car park. This has proved a valuable resource - thanks again to Neale who built it!

**Open Day - 7th September** - Don't forget we need prizes, white elephants and your help - and for you to bring your friends and family along on the day. We do hope to see you then!

**Happy butterfly spotting ☺**

**Selsdon Wood  
Butterflies**

14 butterflies  
found in our wood  
in Summertime

All photographs taken in Selsdon Wood.

**Brimstone**



Large butterfly with pointed wingtips and intricate veining. Male is bright yellow - female much paler.

**Brown Argus**



Male and female similar with brown wings with a line of orange spots and a white fringe.

**Comma**



Male and female similar with scalloped wings in rich oranges and browns.

**Common Blue**



Male is bright blue but female is brown with just a bluish body and less noticeable.

**Gatekeeper**



Also called the Hedge Brown. Male & female similar. Feeds on Bramble & Ragwort

**Large White**



Also known as Cabbage White, Black tips to wings.. Britain's largest white butterfly.

**Marbled White**



Distinctive black & white colouring. Feeds on Knapweed, Thistles, Scabious and Marjoram.

**Meadow Brown**



Active even in wet weather. One of the most common species in grassland.

**Peacock**



The eyespots deter predators. Male may chase off birds to defend his patch. Eggs laid on Nettles

**Red Admiral**



Migrates from central Europe each summer but in mild winters may survive here.

**Silver-washed Fritillary**



Found in wooded areas. Females less orange in colour. Striking courtship flight.

**Small Copper**



Has 2-3 generations each year so often seen late in the season. Caterpillar feeds on Sorrel.

**Small Tortoiseshell**



Hibernates in winter & can be seen early in spring. Lays eggs on nettles

**Speckled Wood**



Likes damp woodland habitat. Seldom feeds on flowers. Caterpillars feed on grass