

Friends of Selsdon Wood

Working to improve our wood



Phone: 020-8657 0423 e-mail: selsdonwood@gmail.com website: www.friendsofselsdonwood.co.uk

April/ August 2013 Newsletter

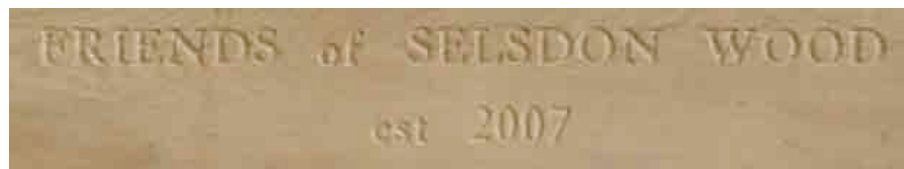
FSW Charcoal Weekend 24-26 May

We had one setback in our preparations for this when a gang of people camped overnight on the edge of Stevens Larch during the early Spring Bank Holiday. They took 2 panels of our deer fence and a number of our poles and stakes (breaking some of them) to make a 'tent'. They also tore a dedicated seat out of the ground, with its concrete base, and moved it round their fire. Needless to say – they left their rubbish behind. Heather, Ted and a couple of helpful passers-by restored the seat, cleared away the rubbish and then took the fence panels and poles back to our coppice area. It took several hours.

Why are people destructive – making so much work for others?



The weekend started with rain pouring down as we loaded the kiln on Friday. Thankfully the weather improved and the glorious sun encouraged a steady stream of visitors to visit the kiln and our membership gazebo on Sunday. The damp delayed sieving the charcoal but we sold it all and several bags of logs. For a full account of the event see the illustrated article on the Events page of the website.



FSW Dedicated seat

The Friends have installed a new seat at the top of Field 1 (the car park field), bought with your donations & subscriptions.

A new dedicated bench has also been installed in Field 2 in memory of Heather Creamer, a lover of Selsdon Wood, who died last December. It is interesting to note that the installation of that bench does not seem to have deterred the badgers in the adjacent sett as there has been much new digging there.



FSW Hi-viz vests

We will be wearing our new vests regularly on Workdays, at Events and patrolling the wood. Here David is modelling the latest in chic vests in this year's fashionable colours of lime and emerald.

David says that he gets funny looks as people see this scruffy old bloke wandering around without a dog. Now they will know what he is. Please tell him or Ted if you see anything wrong or anything that requires attention in the wood. (You may notice that the Council notice board by the Bridle Path entrance has been removed. We are trying to renovate it.)

FSW Lost Property Box

The Friends have installed a Lost Property box on the notice board by the car park. The following await your collection 17.8.13: an elephant glove puppet, cycle cable combination lock, blue led torch, 52mm Lumix lens cap, blue dog lead, girls sparkly black hair grip and 4 dog tags (Sparky Addington Road, 131 CR2 8RX, NADHISHIA '9818* and I'm Microchipped '2250*.) *last 4 digits of a phone number.

The box has already proved its worth. We received a message from a local pet minder and member of FSW who had lost her car keys while out walking. She had been quoted a ridiculously high price for a replacement set and was delighted to find her



keys in the box a couple of days later. She, and the Friends, would love to thank the person who found them. See our website Home page or the forthcoming Selsdon Gazette for the full text of her thankyou message.

Croydon Council Action

We are grateful to Croydon Council for embarking on a programme of renovating the twelve dedicated seats around the reserve. In addition, their contractors are cutting the grass around the seats & benches which will improve access. They were too enthusiastic this year in cutting the paths through the woods and demolished a lot of our wild flowers. We will be reminding them to only cut the centre of the paths next year.



FSW Logs for Sale

To make use of a little of the timber felled in coppicing and by contractors, we can offer bags of logs for a donation of £4 each. If you, or anyone you know, would like to obtain logs from us please contact Neale Fox for information or to arrange collection – phone 020-8657 0384 or e-mail logs.selsdonwood@btinternet.com.

Don't forget to use a fireguard when burning logs that can spark.

FSW Publications

Obtainable from Selsdon Library or the website or contact us - see above.

FSW Colour Information Leaflet - containing Membership Application form and Programme.

FSW Selsdon Wood Map, FSW Red & Green Walks leaflet.

Nature Notes

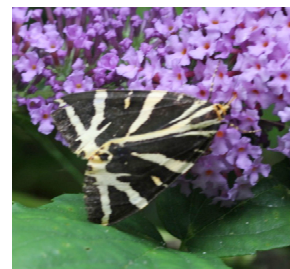
The butterfly to look out for is the Clouded Yellow (pictured). They have been seen in large numbers in the south of the country including nearby Hutchinson's Bank. Any eggs laid should be hatching out now. It is similar in size to Small Tortoiseshell, yellow wings with black edges. The underside of the closed wing shows a distinct orange roundel with a white centre. Some more common butterflies are still on the wing in September. Of the smaller species, Common Blue and Small Copper might still be around while the more obvious larger species could include Red Admiral, Painted Lady, Comma, Peacock, and possibly Speckled Wood and White Admiral in the woodland. Continental Swallowtails and Long-tailed Blues have been arriving on the south coast and if you are optimistic and keep your eyes open you never know your luck – you might encounter one! See the Fauna page of the website for a gallery of butterflies already photographed in the wood. If you get a shot of any that are not included we would love to add your pictures to our gallery.



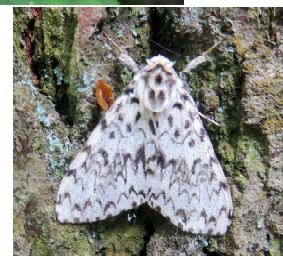
The last few months of the year produce an abundance of fungi on tree stumps, fallen branches, bramble stems, standing trees and on the ground. While some species are predictably seen annually, each year seems to provide a few unexpected species. Identification of fungi is not always easy but get out and enjoy the huge variety of shapes, sizes and colours.

At this time of the year the trees and bushes produce their fruits, berries and nuts. When there is a good crop of Sweet Chestnuts they can litter the paths but if you want to collect some you will have to get them before the squirrels and other animals – they like them too! At times acorns fall in such quantities that walking in the wood can feel like being in a hailstorm. Watch out for Grey squirrels and Jays collecting and burying the acorns – how do they remember where they have buried them? Other edible fruits are produced by Blackberry, Elder and Blackthorn.

The berries and insects of autumn provide food for migrant birds stocking up their fat reserves before leaving for other countries. Blackcaps and Chiffchaffs wander the woods while occasional flocks of House Martins or Swallows swoop over the treetops. Unexpected species can appear and in recent years have included Hobby, Red Kite and Honey Buzzard. Two-barred Crossbills have been reported in the north of England and Scotland – they prefer conifers and might occur in Larches.



STOP PRESS: Two moths new to Selsdon Woods photographed this month - the Jersey Tiger Moth (top) - by Ted Forsyth in The Wend (17/8/13) and the Black Arches Moth by Tony Flecchia in Avis Grove (7/8/13). See the website Fauna page for a full gallery of all the animals that have been photographed in the wood. If you have any species to add we would love to have them.



Dates for your diary – see website for full programme

Work days – Sundays: September 29th, October 6th 7 27th, November 3rd & 24th.

Meet at 10am in Selsdon Wood car park off Old Farleigh Road. You choose jobs to suit your strength. You soon warm up on a cold day, so don't let the weather deter you. Tools are provided but please bring a drink and food if you feel you need them. You work for as long as suits you - some of us work until about 2.30pm, others leave earlier. If you need more information please contact Ted closer to the time on 020-8651 0558 or e-mail: tedforsyth@btinternet.com

Members meetings – Mondays: September 30th, October 28th, November 25th.

All from 8 to 10pm in The Forum, Forestdale - all members are welcome!

Guided Walks of Discovery – Walks meet at Old Farleigh Road car park. Our Walks are slow and easy - lasting about 2 hours, looking at all flora & fauna.

August - Wednesday 21st 2pm - Mini-Beast Hunt with Roger Hawkins – mainly for the children
October - Sunday 13th 10am - Autumn Fungi & Fruit with Jane McLaughlin

FSW OPEN DAY – Sunday 1st September 12 noon to 4pm

See displays and items for sale from: SRA, RSPB, East Surrey Badger Protection Society, East Surrey Wood Turners, walking stick maker, local potter, Beekeepers, Downlands Trust, Friends of the Earth, Littleheath Friends and Croydon Epilepsy society.

There will also be lots of interest for children including a Face Painter, a Balloon Sculptor, a Scavenger Hunt, and activity tent with the theme of 'flowers' & a story time session from 2 to 2.30pm

As usual the FSW will have our White Elephant Stall with books, a tombola with many prizes, our Photographic Competition for you to judge and our 2014 Calendar will also be on sale - see below.

There will be short, guided walks at 12.30 & 2.30 for about an hour and refreshments will be provided throughout the afternoon by local Scouts.

Please support our Open Day!

We would welcome your help setting up (from about 9.30 although the stalwarts will probably be there earlier), clearing up (between 4 and 5pm), and on our stall(s) during the day to relieve the band of volunteers who are usually there all day without a break. The more help the more chance of selling white elephants, books etc!

We can accept items for sale on the day too - so don't leave your white elephants and unread books at home.

Last but not least, we would love to see all of you at some time during the event. If each Friend spent £2 on our stall we would be able to start funding the next seat or another owl box! And if every Friend and their family could bring along at least one other person to share the wood with them, that would be even better.



FSW Calendar 2014

(21 x 29.7cm)

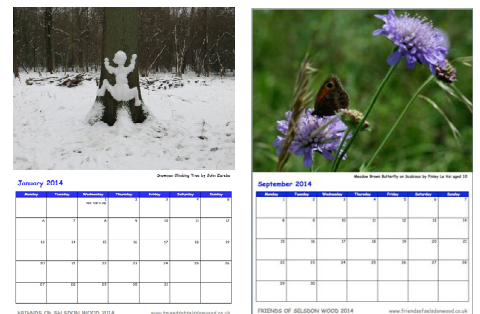
Copies will be on sale at the FSW Open Day on 1st September.

Alternatively, to reserve a copy

phone 020-8657 0423

or e-mail selsdonwood@gmail.com

£5 inc envelope. p&p £1.20



ANNUAL PHOTOGRAPH COMPETITION

The short listed photographs for this year's competition will be judged by a secret ballot by the visiting public in the Selsdon Residents Association tent at our Open Day on September 1st. Come along to enjoy and vote for your favourite and remember it's not too soon to start thinking of next year's competition!

For regular up-to-date news see the FSW website: www.friendsofselsdonwood.co.uk - it is full of information about Selsdon Wood and what the Friends do to maintain it.